

**FEATURES**

- 2 Year Warranty
- Universal AC Input / Full Range
- Remote Sense & Remote On/Off
- High Power Density: 7.15 watts/cu in.
- Power Factor Corrected to EN61000-3-2 Class D
- Approved to UL/CUL/TUV/CB/CE & Class B Emissions
- Providing Peak Power 700W within 500uS Duty Duration
- U-Chassis & Enclosed with Built-in Fan Mechanical Options
- Protections: Short Circuit/ Overload/ Over Voltage/ Over Temp



PSRL5016U4 Series: (U-Chassis): 7(L) x 4(W) x 2(H) inches  
PSRL5016E4 Series: (Enclosed with built-in fan): 8(L) x 4(W) x 2(H) inches



**SPECIFICATIONS: PSRL5016E4 Series**

All specifications are based on 25°C, Nominal Input Voltage, and Maximum Output Current unless otherwise noted.  
We reserve the right to change specifications based on technological advances.

**INPUT SPECIFICATIONS**

Input Voltage	90 – 264VAC Full Range
Input Frequency	47 to 63Hz
Input Current	5A at 90VAC full load
Inrush Current	35A max @ 230VAC with full load and cold start.
Leakage Current	1.5mA @ 240VAC
Remote ON/OFF	Defined <b>INH</b> (Pin 4) on CON3, requiring a TTL low signal to inhibit output.

**OUTPUT SPECIFICATIONS**

Output Voltage	See Table
Output Power Range	400 Watts max with airflow. (See Note 2)
Output Adjustability	Output user adjustable ±5% minimum.
Total Regulation	±1%
Output Current	See Table
Ripple & Noise (peak to peak)	±1%
Transient Response	Returns to within 1% in less than 2.5ms for a 50% load change and the peak transient does not exceed 5%.
Hold-Up Time	20ms min. at 80% of full load.
Overshoot	Turn-On & Off overshoot < 5% over nominal voltage.
Turn On Delay	1 second maximum at 120VAC.
Remote Sense	Designated as <b>V1S+</b> (Pin1) and <b>V1S-</b> (Pin2) on the CON3. Voltage compensates for up to 0.5V line drop.

**PROTECTION**

Over Voltage Protection	Unit latching down when output exceeds 130% and recycle AC input to reset.
Short Circuit Protection	Trip without damage and auto-recovery.
Over-Temperature Protection	Unit protected of excessive operating ambient 85°C and automatic recovery.
Over-Power Protection	Hiccup mode 110-140% and auto-recovery.
Input Voltage Protection	Power shut down under 80 ±5VAC, and recovered over 86VAC.
Input Circuit Protection (Primary)	One 250V/ 8A fuse inserted.

**GENERAL SPECIFICATIONS**

Efficiency	80% minimum (Measuring at 230VAC and full load).
Withstand Voltage	1500 VAC input line to chassis (10mA DC cut off current); 3000VAC between primary and secondary windings. Primary to core 1500VAC. All for 3 seconds.
Burn In	45 ±5°C for one hour @ 230VAC with full load.
PFC	Active power factor correction meets EN61000-3-2 class D.
Power Good	Designated as <b>PG</b> on the CON3 will go high 100-500ms after regulation and goes low 1ms before loss of regulation.
Grounding Test	Apply 25A from ground pin of the three prong plug to the far most earth. Max allowable resistance is 0.1 ohm.
LED Display	Bi-color <b>LED1</b> emit green for Power On and emit orange when protection is enabled or INH is applied a low signal.

<b>SPECIFICATIONS (CONTINUED)</b>	
<b>ENVIRONMENTAL SPECIFICATIONS</b>	
Operating Temperature	0°C to +70°C ambient, de-rating at 2.5% per degree from 50°C to 70°C.
Storage Temperature	-20°C to +85°C
Operating Humidity	5% to 90% RH, non-condensing
Storage Humidity	5% to 95% RH, non-condensing
Vibration	5 ~ 50Hz, acceleration 7.35 m/(s x s) on X, Y, and Z Axis.
Cooling	<b>PSRL5016U4 Series</b> (U-Chassis): 22CFM forced airflow to achieve maximum power. <b>PSRL5016E4 Series</b> (Enclosed with built-in fan): Self cooled by built-in fan.
Fan Drive	12VDC/400mA is available to drive an external fan.
MTBF	100,000 hours (according to MIL-HBK-217F) at 30°C.
<b>PHYSICAL SPECIFICATIONS</b>	
Weight	<b>PSRL5016U4 Series</b> (U-Chassis): 950g <b>PSRL5016E4 Series</b> (Enclosed with built-in fan): 1050g
Dimensions	<b>PSRL5016U4 Series</b> (U-Chassis): 7(L) x 4(W) x 2(H) inches. <b>PSRL5016E4 Series</b> (Enclosed with built-in fan): 8(L) x 4(W) x 2(H) inches.
Warranty	2 years
<b>SAFETY</b>	
Emissions	FCC part15, CISPR 22 Class B, Conducted.
Safety Regulations	Approved to UL60950-1, CSA C22.2 No. 60950-1-03, TUV EN60950-1, CE Mark (LVD) EN61000-3-2,3, & IEC61000-4 Series Regulations and CB.

### OUTPUT VOLTAGE / CURRENT RATING CHART

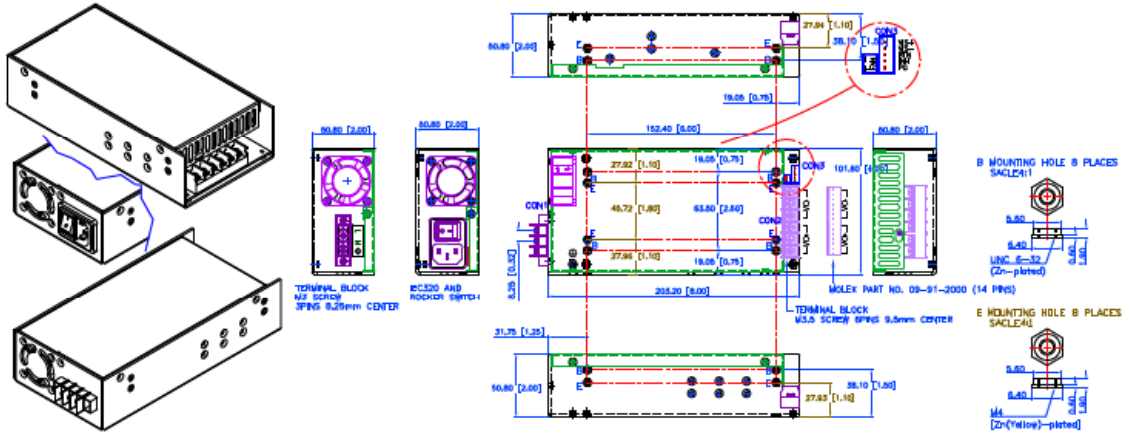
Model	Output Voltage Range	Preset Voltage	Output Current	Regulation	Ripple & Noise
<b>PSRL5016E4-12</b>	12 - 15 VDC	12 VDC	33.34A	±1%	±1%
<b>PSRL5016E4-18</b>	16 - 21 VDC	18 VDC	25A	±1%	±1%
<b>PSRL5016E4-24</b>	22 - 30 VDC	24 VDC	18.19A	±1%	±1%
<b>PSRL5016E4-36</b>	31 - 41 VDC	36 VDC	12.9A	±1%	±1%
<b>PSRL5016E4-48</b>	42 - 55 VDC	48 VDC	9.53A	±1%	±1%

### NOTES

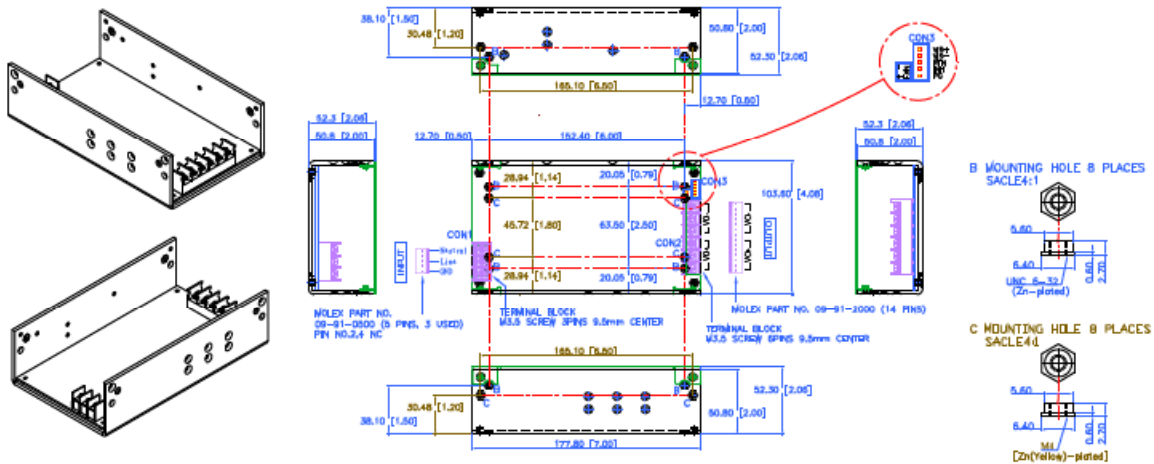
1. PSRL5016E4 Series is designated as PSRL5016xy-z where x = E (Enclosed with built-in fan type), y = 4 for output power of 400W, and z = 12, 18, 24, 36, or 48 for output voltage.
2. PSRL5016E4 Series: Self-cooled by built-in fan; PSRL5016U4 Series: 22 CFM forced airflow to achieve maximum power.
3. Providing peak current for 500uS with standard models, longer duty duration should contact manufacture.
4. All output ranges are covered in agencies certification and preset voltage will be set as standard mode if any request other than standard output then should contact us in advance.
5. 1% minimum load is required to maintain the ripple and regulation.
6. Ripple and noise is measured from 10KHZ to 20MHZ bandwidth at output terminals with parallel 0.1µF ceramic and 22µF electrolytic capacitors.
7. Output is fully isolated.

**MECHANICAL DRAWINGS**

**PSRL5016E4 Series (Enclosed with built-in Fan Type): 8(L) x 4(W) x 2(H) inches; Weight: 1050g**



**PSRL5016U4 Series (U-Chassis Type): 7(L) x 4(W) x 2(H) inches; Weight: 950g; Option: Top Cover**



**I/O CONNECTOR PIN ASSIGNMENT**

**AC Input Connector (CON1):**

PSRL5016U4 Series: Mating Molex Part No. 09-91-0500 equivalent (5 pin, 3 used), or M3, 3 pins terminal block 8.25mm center.  
 PSRL5016E4 Series: IEC320 or equivalent Snap-in mounting type or M3.5, 6 pins Terminal block 9.5mm center.

**Output Connector (CON2):**

Mating Molex 14 pins (09-91-2000), or Howder (HD-121-6P) M3.5, 6 pins terminal block, 9.5MM Center.

**Output Pin Assignment:**

(See table at right).

**Logic signal connectors (CON3):**

Mating JST XHP-5 or equivalent (CHYAO SHIUNN JS-2001-05).  
 Mating Pins: JST SXH-002T-P0.6 for AWG 30 to 26.

**Mounting Inserts:**

4 Places 6-32. Max. Penetration 0.13" on bottom side and 4 places 0.25" on both sides.

**Fan Drive:**

Mating JST XHP-2 or equivalent (CHYAO SHIUNN JS-2001-02).

Output Pin Connection		
	Howder	Molex
<b>Vo+</b>	Pins 1 – 3	Pins 1 – 7
<b>Vo-</b>	Pins 4 – 6	Pins 8 – 14